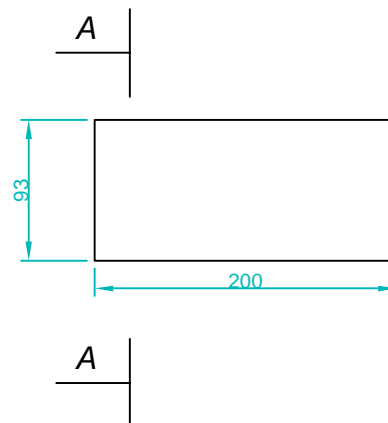
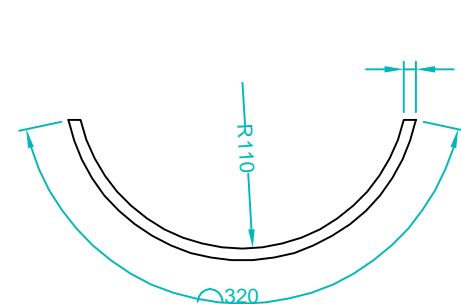


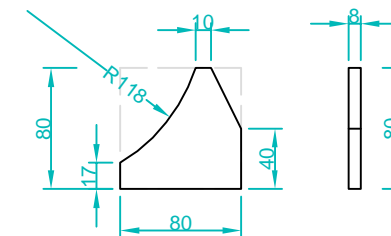
**DETALIUL "1"**  
scara 1:5



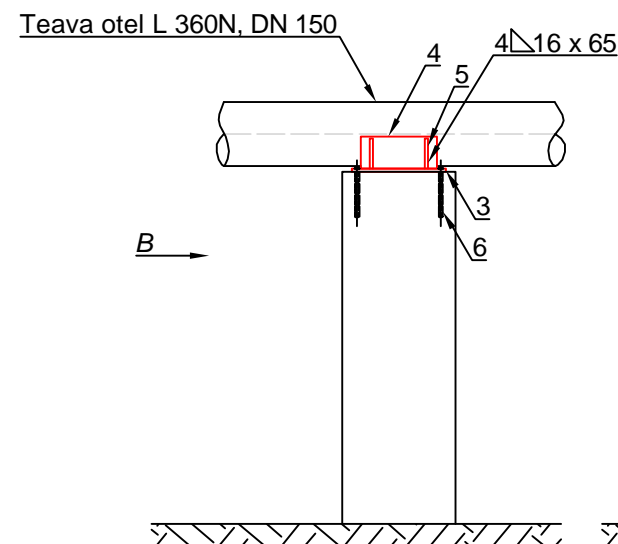
**SECTIUNE A - A**  
scara 1:5



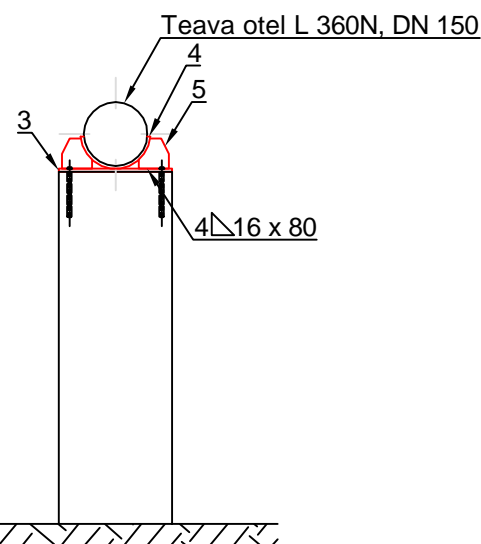
**DETALIUL "2"**  
scara 1:5



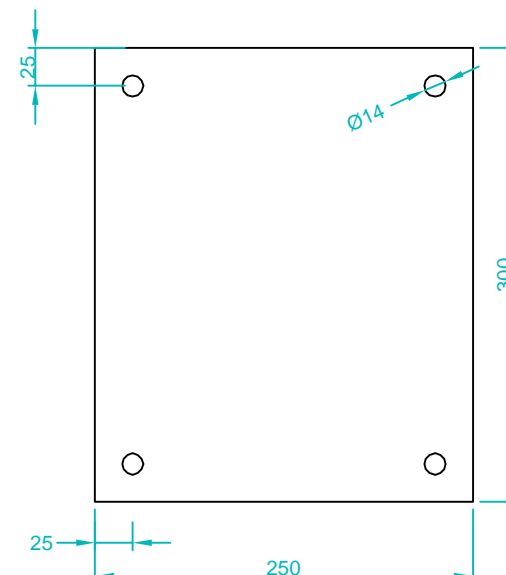
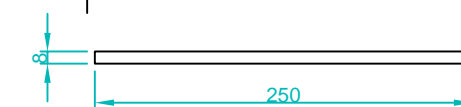
**VEDERE LATERALA**  
scara 1:20



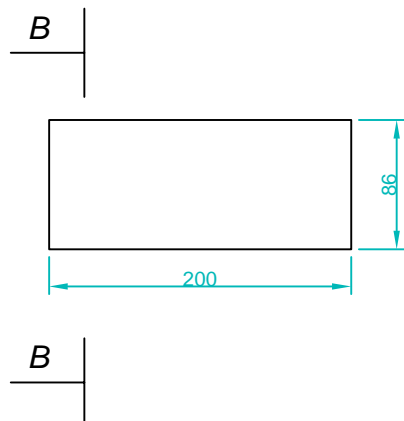
**VEDERE "B"**  
scara 1:20



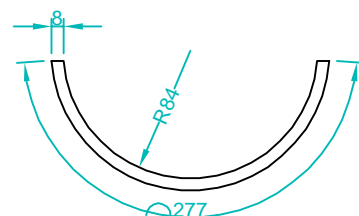
**DETALIUL "3"**  
scara 1:5



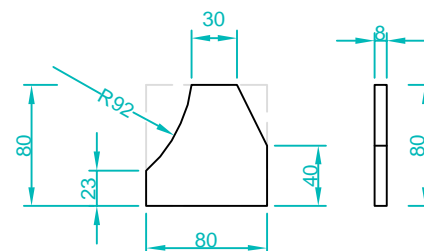
**DETALIUL "4"**  
scara 1:5



**SECTIUNE B - B**  
scara 1:5



**DETALIUL "5"**  
scara 1:5



Poz.	DENUMIRE	DIMENSIUNI	MASA [Kg]	MATERIAL	STAS	BUC.	MASA [Kg]
1	Tabla OL gr. 8mm	320 x 200	4.01	S235JR	SR EN 10029/2011	2	8.02
2	Tabla OL gr. 8mm	80 x 80	0.40	S235JR	SR EN 10029/2011	8	3.20
3	Tabla OL gr. 8mm	300 x 250	4.71	S235JR	SR EN 10029/2011	4	18.84
4	Tabla OL gr. 8mm	277 x 200	3.48	S235JR	SR EN 10029/2011	2	6.96
5	Tabla OL gr. 8mm	80 x 80	0.40	S235JR	SR EN 10029/2011	8	3.20
6	Ancora conexpand FBN II	110 - M12				16	0.00
	Sudura 3% [Kg]						1.21
	TOTAL GREUTATE [Kg]						41.43

Verificator/ Expert	Nume	Semnatura	Cerinta	Referat / Expertiza Nr. / Data
------------------------	------	-----------	---------	--------------------------------

S.C. SNIF PROIECT S.A. Targoviste Numar de inmatriculare J15/925/2005				Beneficiar: CONPET S.A. PLOIESTI	Pr. nr. 310
Specificatie	Nume	Semnatura	Scara: 1:20 1:5	"Inlocuire conducta de transport titei 6 5/8" Ochiuri-Moreni, in zona statie Ochiuri - traversare parau Slanic, in lungime de cca. 600m si in zona islaz Ocnita in lungime de cca. 3000m (total cca. 3600m) si refacere instalatie de lansare curatitoare din incinta Statiei Ochiuri"	Faza PT+CS+DE
Sef proiect	Ing. Costea Paul				
Desenat	Ing. Radu Florin		Data: 2015		
Proiectat	Ing. Costea Paul			Detaliu fixare gara godevil pe stalpi din beton	Pl. nr. 7.2